



Pattern finished in June, 2025  
Oslo, Norway

This pattern is for personal non-commercial use only. The pattern may not be copied, resold or redistributed in any way. Nor may you sell any items produced using the directions in this pattern.

**Technique** Machine knitting (with ribber bed & intarsia carriage)

**Gauge** 28 st in 10 cm

**Chest circ. of finished piece** 104 cm

**Length** 56 cm (from top shoulder)

# Front

## Waste yarn cast on

- Cast on 150 stitches in a 1 × 1 rib pattern on waste yarn.
- Add a cast-on comb
- Knit 5 rows in waste yarn (3 tension)
- Knit 3 rows on main bed only (ribber carriage set to 0)
- Cut waste yarn and drop all stitches from main bed
- Return the carriage to the right side

## Main yarn cast on

- Set the ribber carriage back to knitting
- Knit one row at the tightest tension (tension 0)
- Increase tension to 3
- Knit 3 rows circular
- Increase tension to 5

## Elastic waist band

- Reset counter
- Knit 20 rows
- Transfer all stitches from ribber into main bed

## Front bodice

- Remove ribber carriage and main carriage. Replace with intarsia carriage. Work in tension 7
- Reset counter
- Knit **charts 1, 2 and 3** (67 rows)



Pattern charts 1, 2 and 3

- Change colors to start on **charts 4, 5 and 6**
- Reset the counter
- Knit until row 28 of the pattern chart



Pattern charts 4, 5 and 6 until row 28

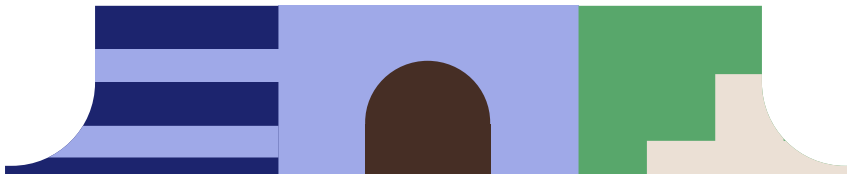
## Armhole

While following the charts 4 5 and 6,

- Cast off 8 stitches on the side of the carriage. knit one row
- Cast off 8 stitches on the side of the carriage. knit one row
- Reduce 1 stitch each row for 12 rows

(- 20 stitches on each side in total)

Continue in pattern until row 67 of chart 4, 5 and 6



Pattern charts 4, 5 and 6 from armhole to row 67

- Change colors to start on **charts 7 and 8** (there is no chart for the top right square, as this will continue in a solid color)
- Reset the counter
- Knit until row 36 of the pattern chart



Pattern charts 7, and 8 until row 36

## Neck

While following charts 7 and 8,

- Put the 30 needles on the other side of the carriage on hold (set the carriage to not knit 'on hold' needles)
- Knit one row
- Cast off 22 stitches on the side of the carriage to create the center of the neck

## Shoulders

- Reduce 1 stitch -on the neck side- on each row for 12 rows
- Continue knitting until row 58
- Put 5 needles on hold -on the arm side- every other row 5 times (10 rows) to create the shoulder slope
- Bring all needles (of the current shoulder) back into working position
- Knit one more row
- Cast-off current shoulder
- Bring the other shoulder's needles back into working position and repeat the same steps

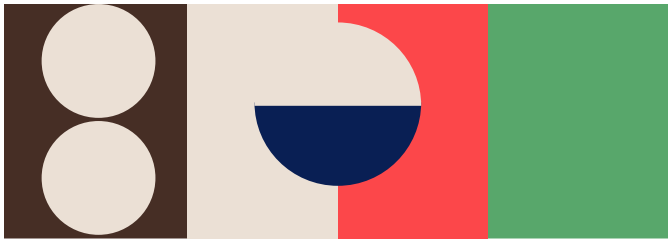


Pattern charts 7, and 8 from row 37 to row 70

## Back

Repeat the same steps as the front until the last set of squares. knit replace charts 7 and 8 with charts 9 and 10.

- Knit until row 63 of **charts 9 and 10** (there is no chart for the top right square, as this will continue in a solid color)



Pattern charts 9, and 10 until row 63

### Shoulder slope

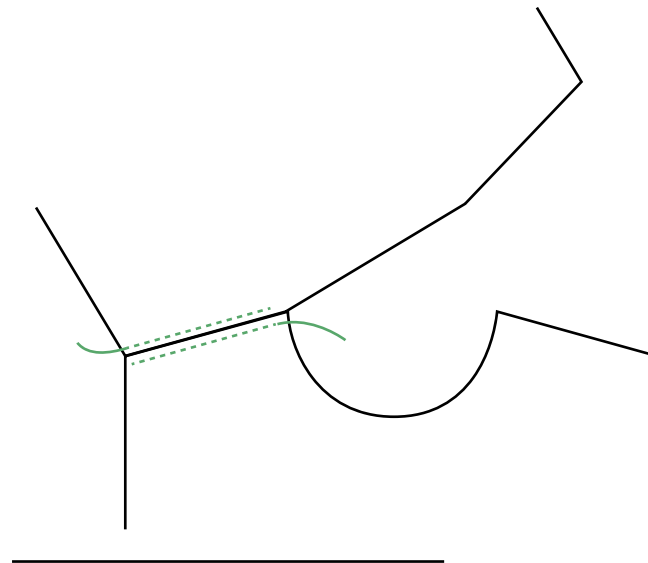
- Put 5 needles on hold every other row -on the arm side- a total of 5 times (10 rows) to create the shoulder slope.
- Bring all needles (of the current shoulder) back into working position
- Knit one more row
- Cast-off the current shoulder.



Pattern charts 9, and 10 from row 64 to 75

## Ribbing and assembly

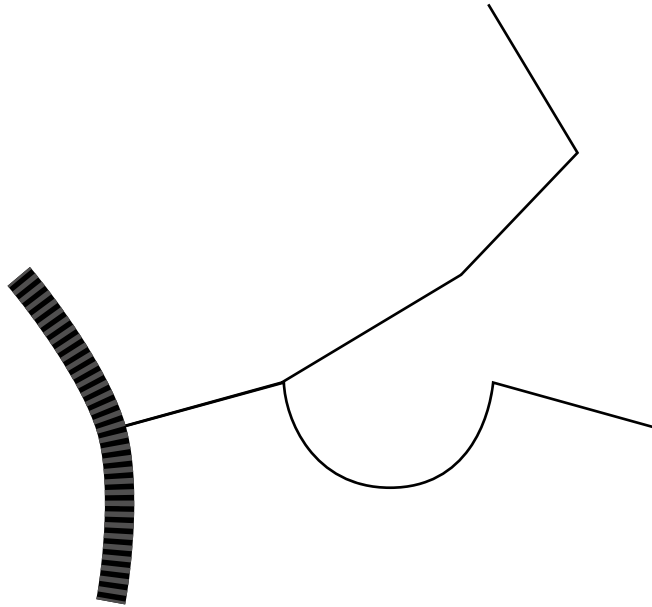
- Start by attaching one front and back shoulder.



### Armhole ribbing

- Cast-on 170 stitches. Follow the same steps as for the front ribbing (waste yarn cast on, circular knitting)
- After circular ribbing, work the 1×1 ribbing in tension 4
- Knit 16 rows
- Transfer all stitches from ribber to main bed
- Add the bodice armhole stitches to the needles and bind off ribbing and armhole edge together

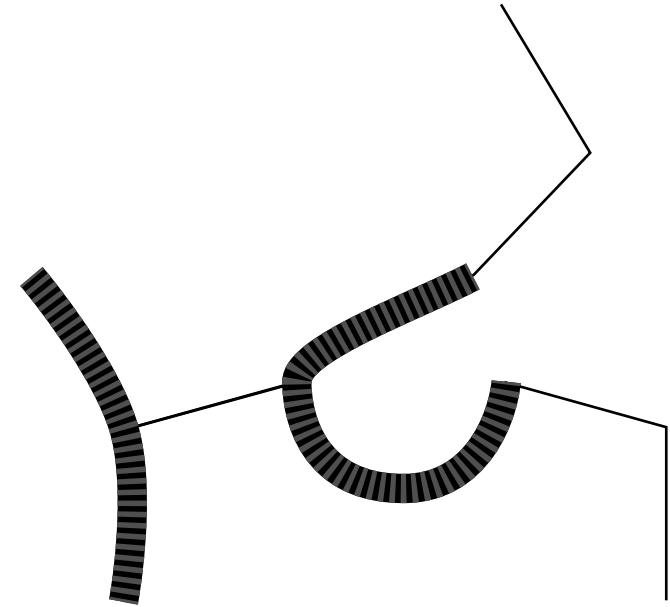




Armhole ribbing and armhole edge are attached on one side of the garment

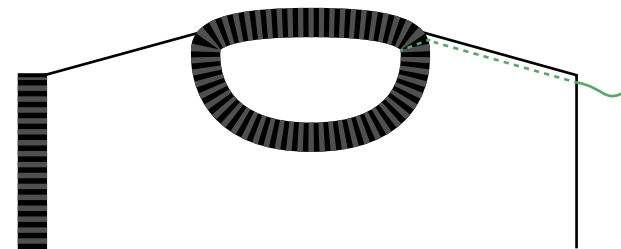
### Neckline ribbing

- Cast-on 144 stitches. Follow the same steps as for the front ribbing (waste yarn cast on, circular knitting)
- After circular ribbing, work the 1×1 ribbing in tension 4
- Knit 16 rows
- Transfer all stitches from ribber to main bed
- Add the bodice neckline stitches to the needles and bind off ribbing and neckline edge together



Neckline ribbing is attached to neckline edge

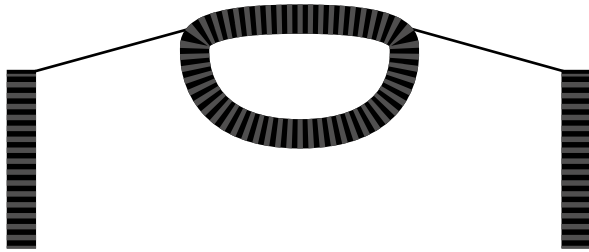
Attach the front and back pieces on the remaining shoulder. Stitch the neckline ribbing



Second shoulder's front and back pieces, as well as neckline ribbing are attached

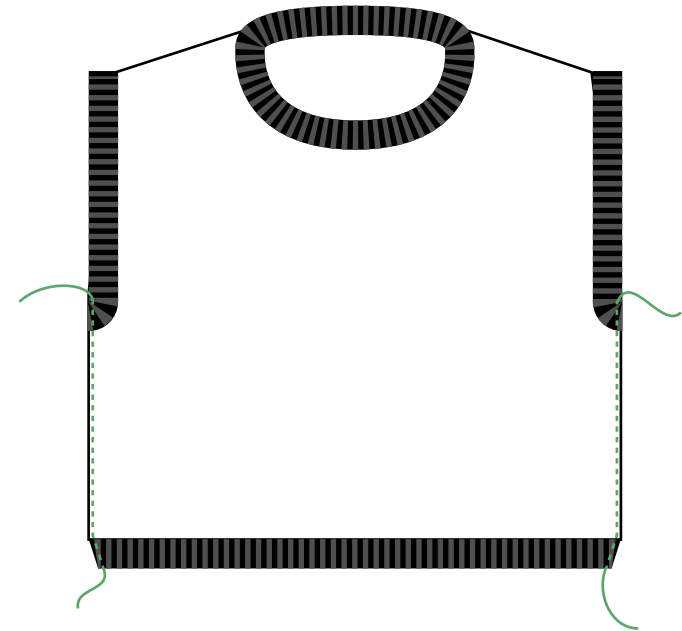
### Armhole ribbing

- Cast-on 170 stitches. Follow the same steps as for the front ribbing (waste yarn cast on, circular knitting)
- After circular ribbing, work the 1×1 ribbing in tension 4
- Knit 16 rows
- Transfer all stitches from ribber to main bed
- Add the bodice remaining armhole stitches to the needles and bind off ribbing and armhole edge together



*Second armhole ribbing and remaining armhole edge are attached*

- 
- Stitch the front and back pieces through the sides of the vest, including armhole ribbing and bottom ribbing.



**Tadaa**

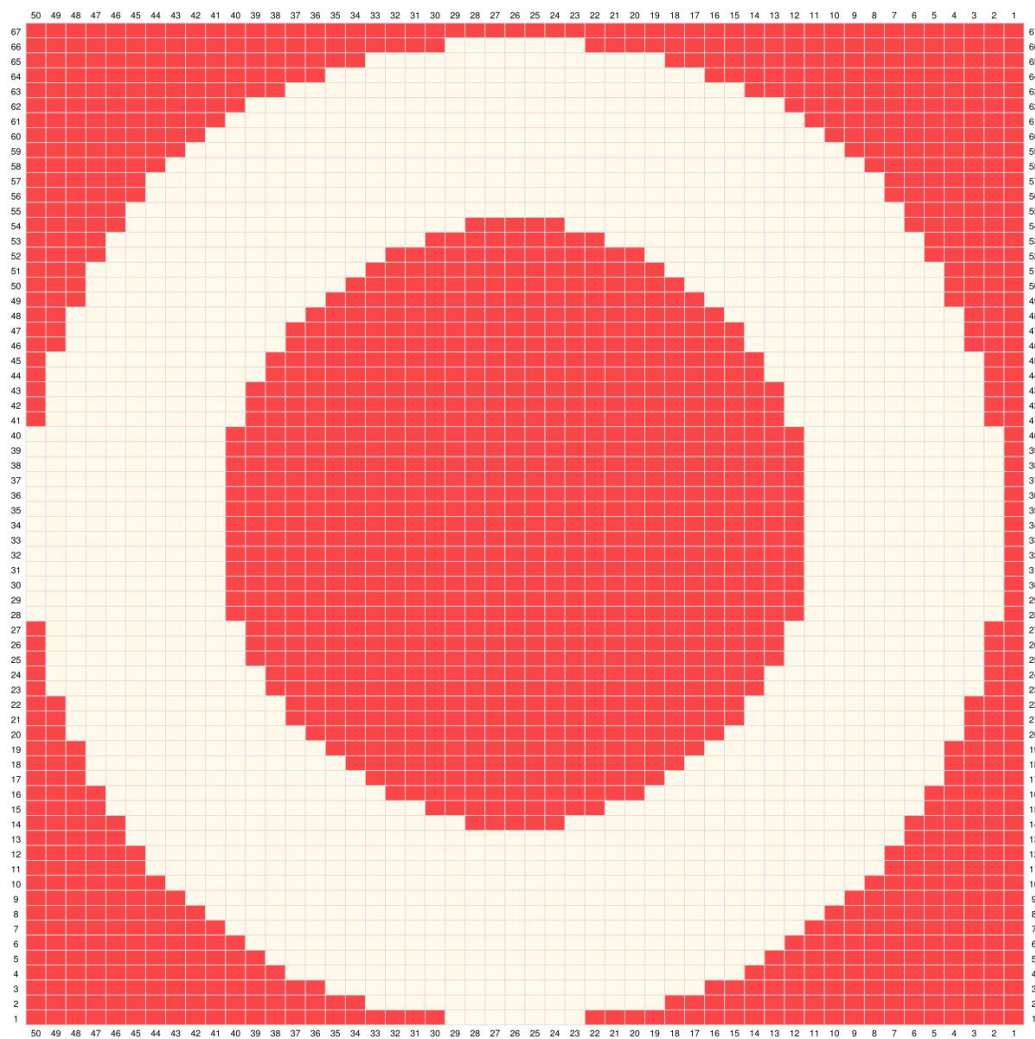


Chart 1

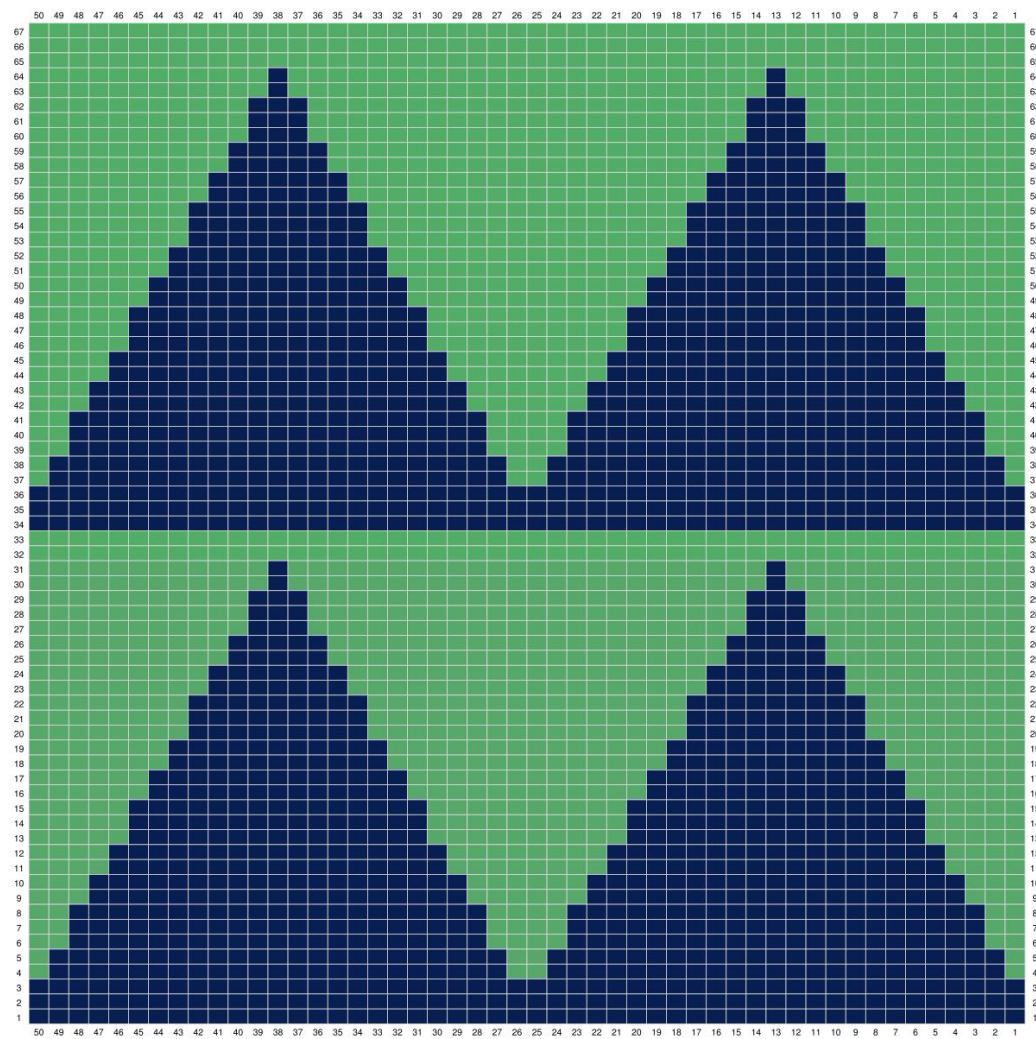


Chart 2



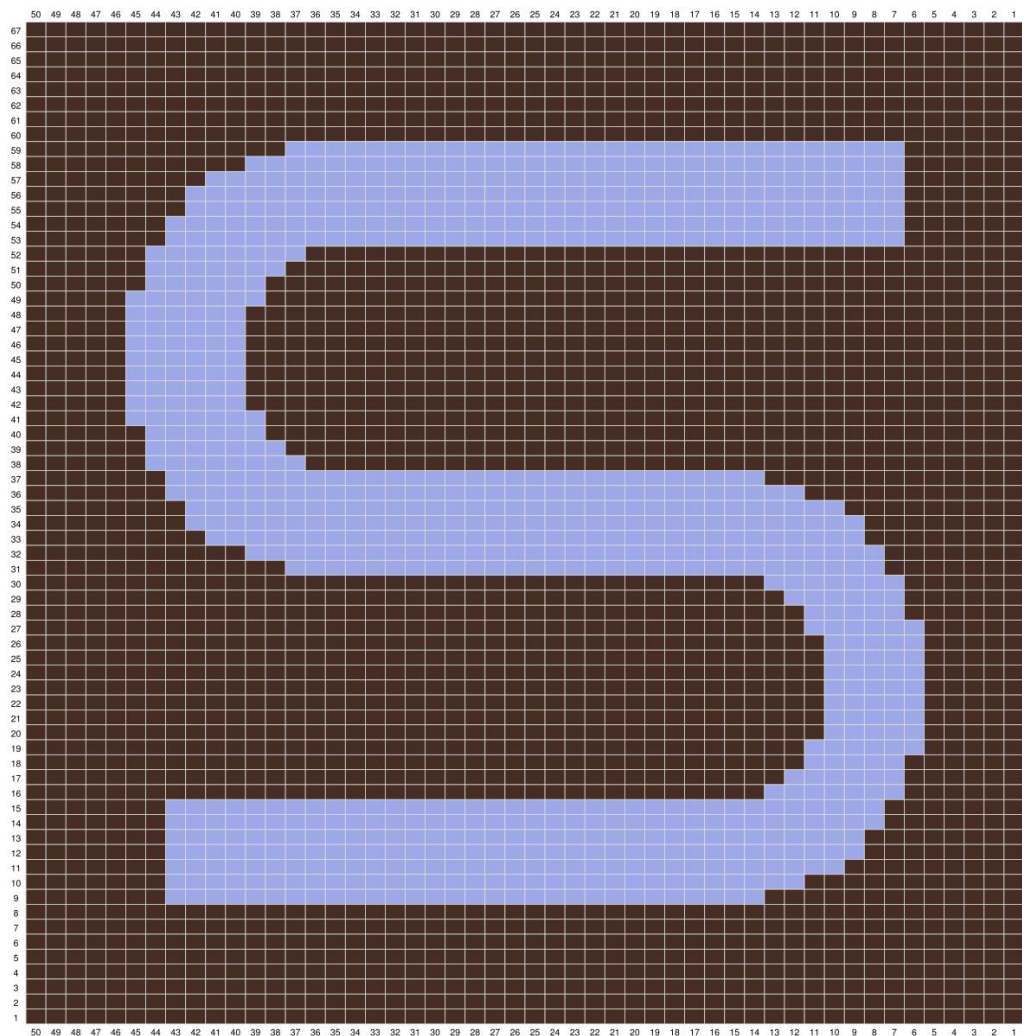


Chart 3

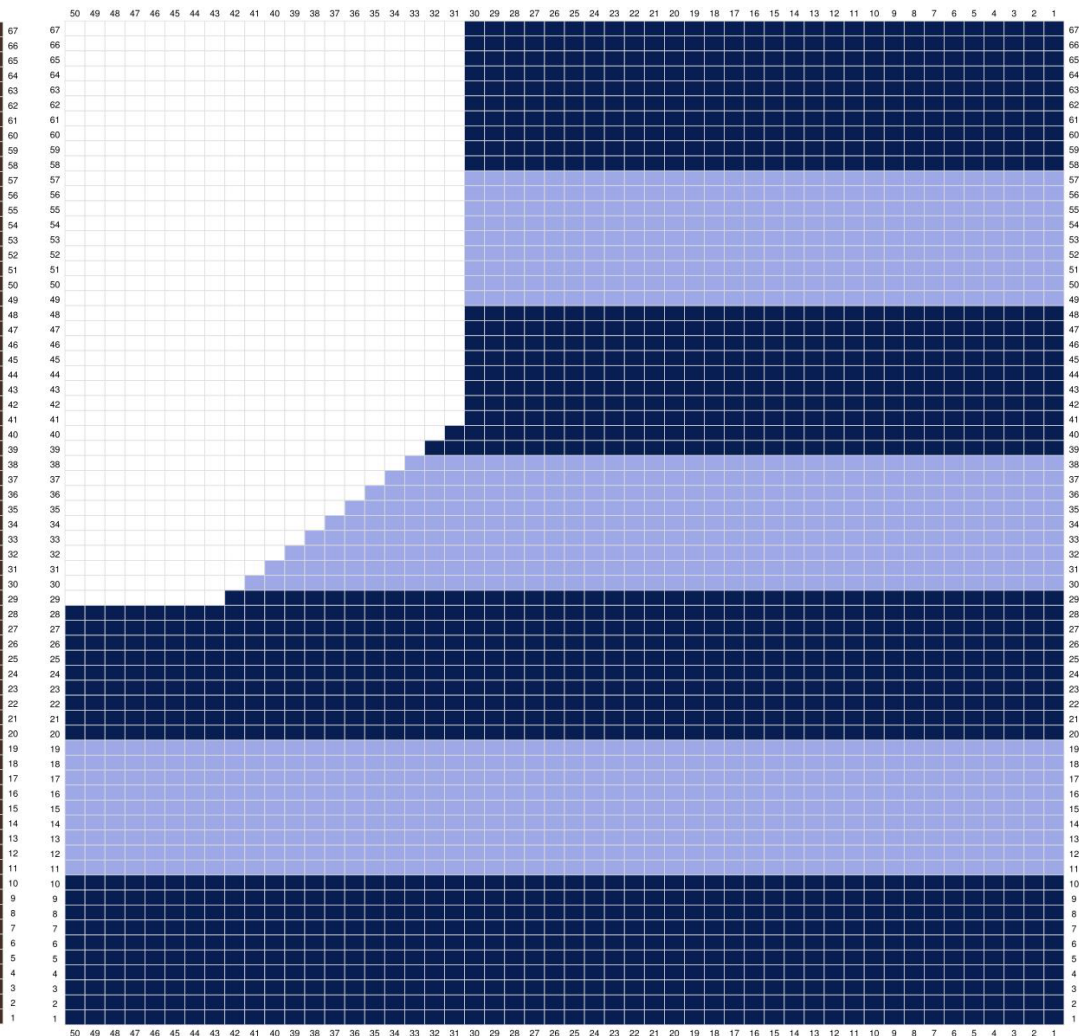


Chart 4

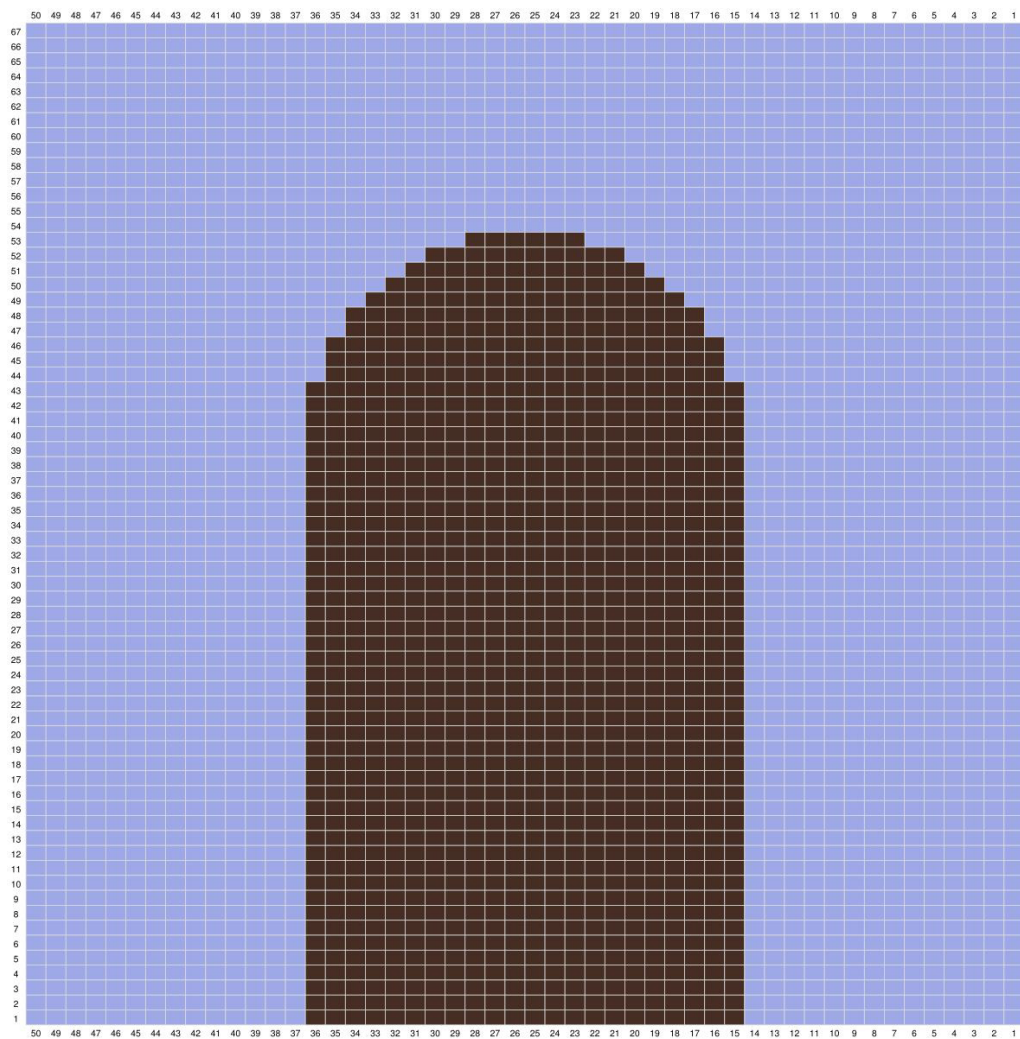


Chart 5

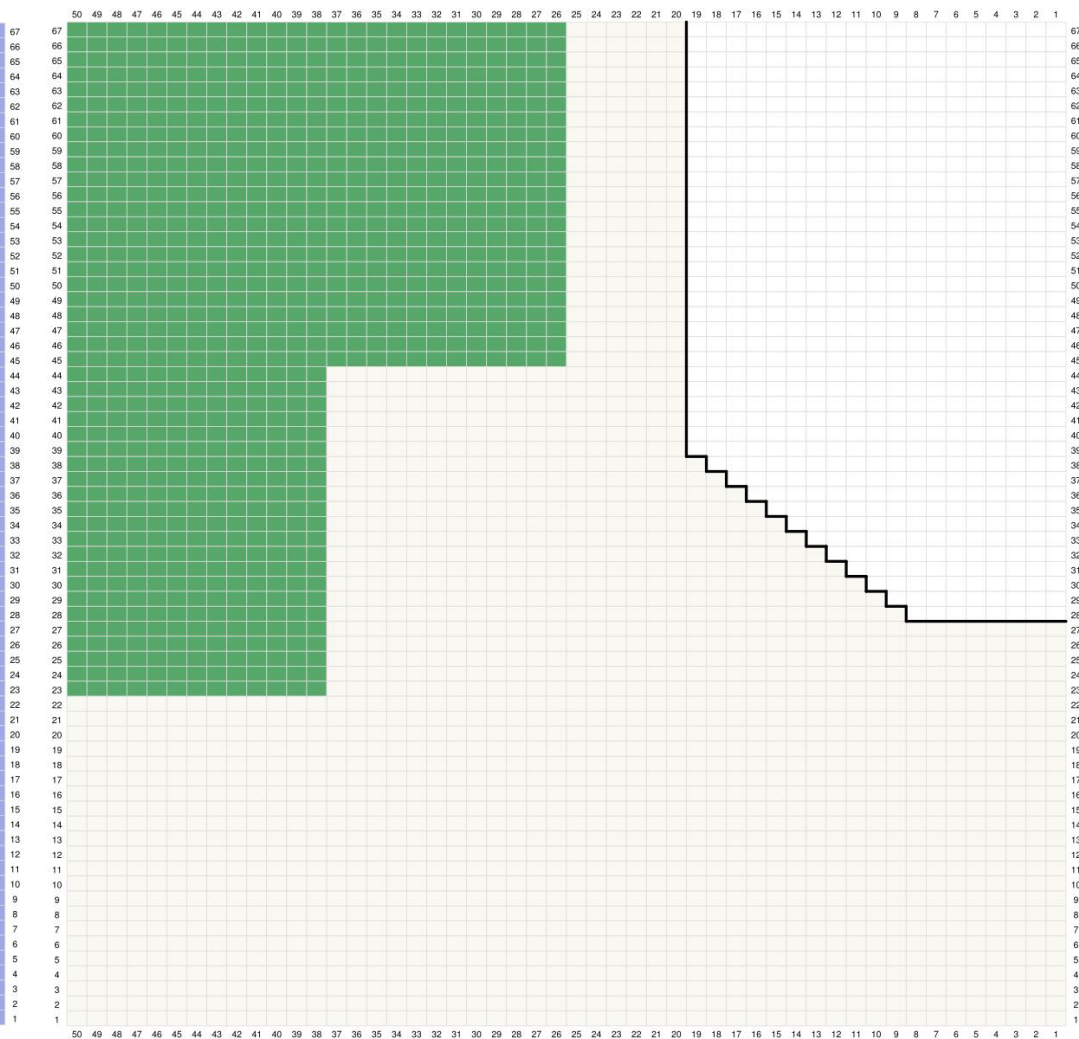


Chart 6



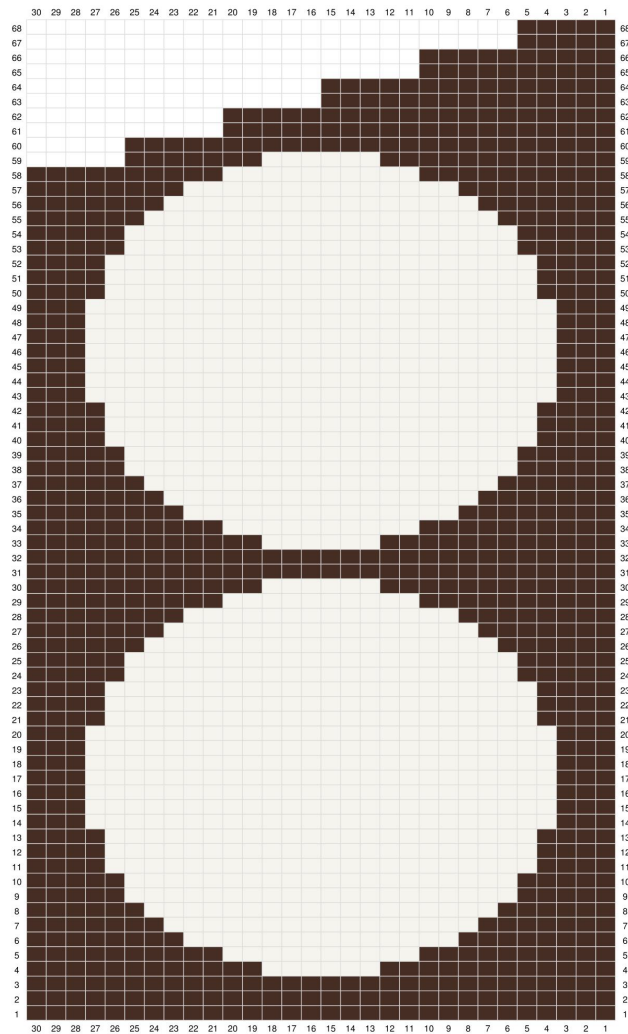


Chart 7

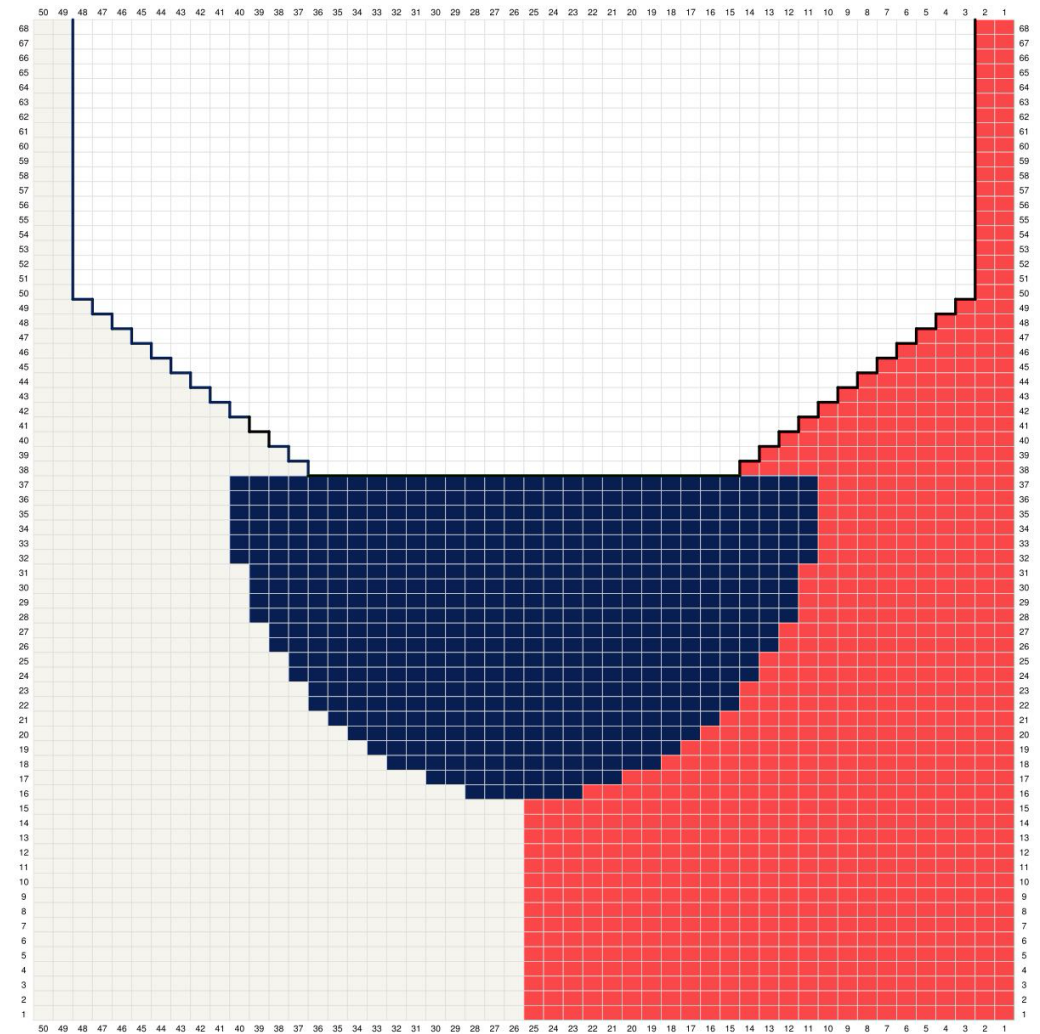


Chart 8

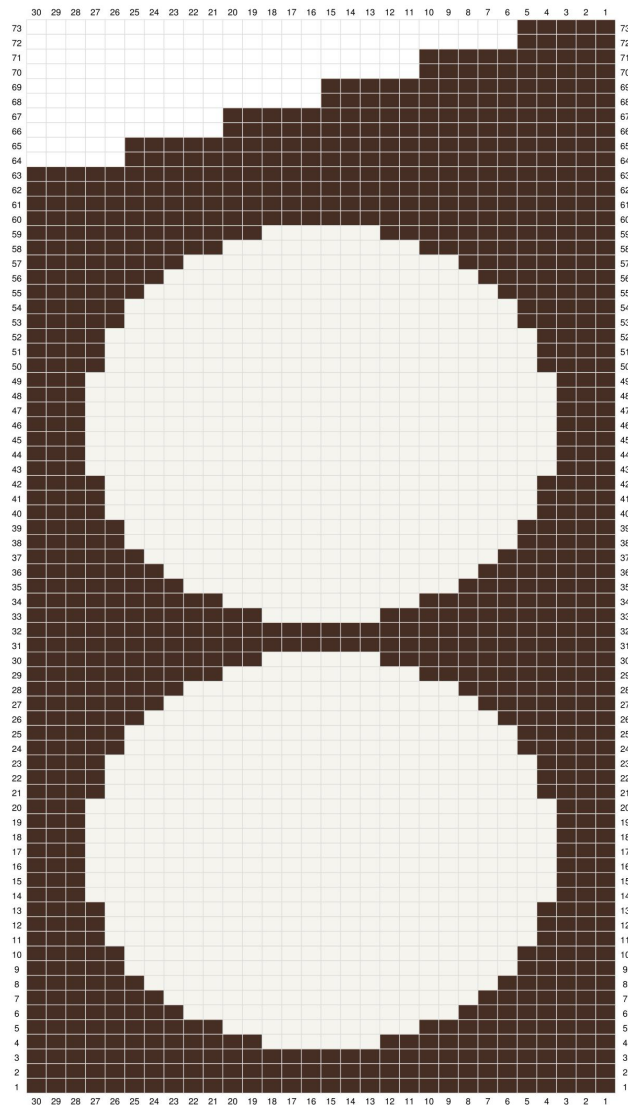


Chart 9

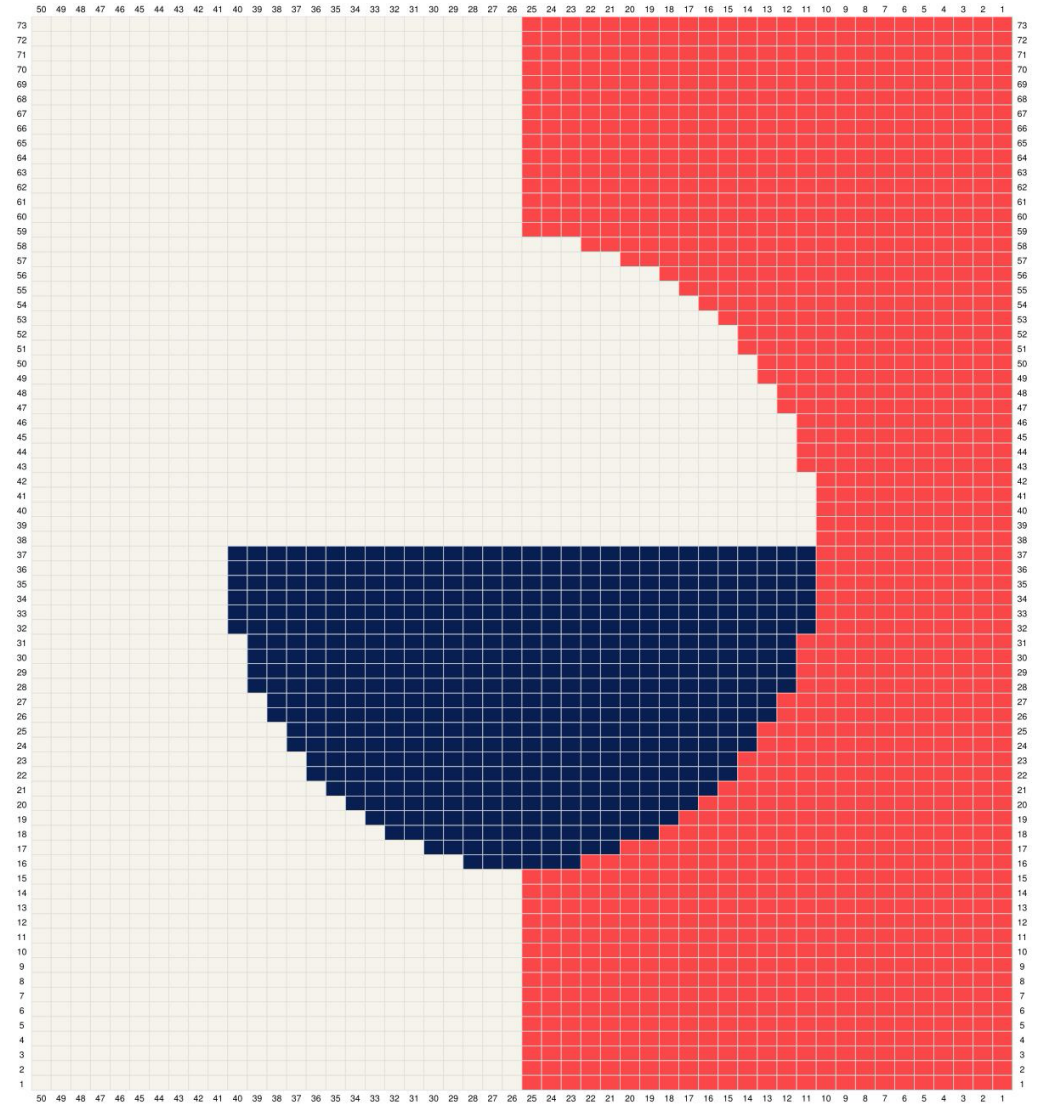
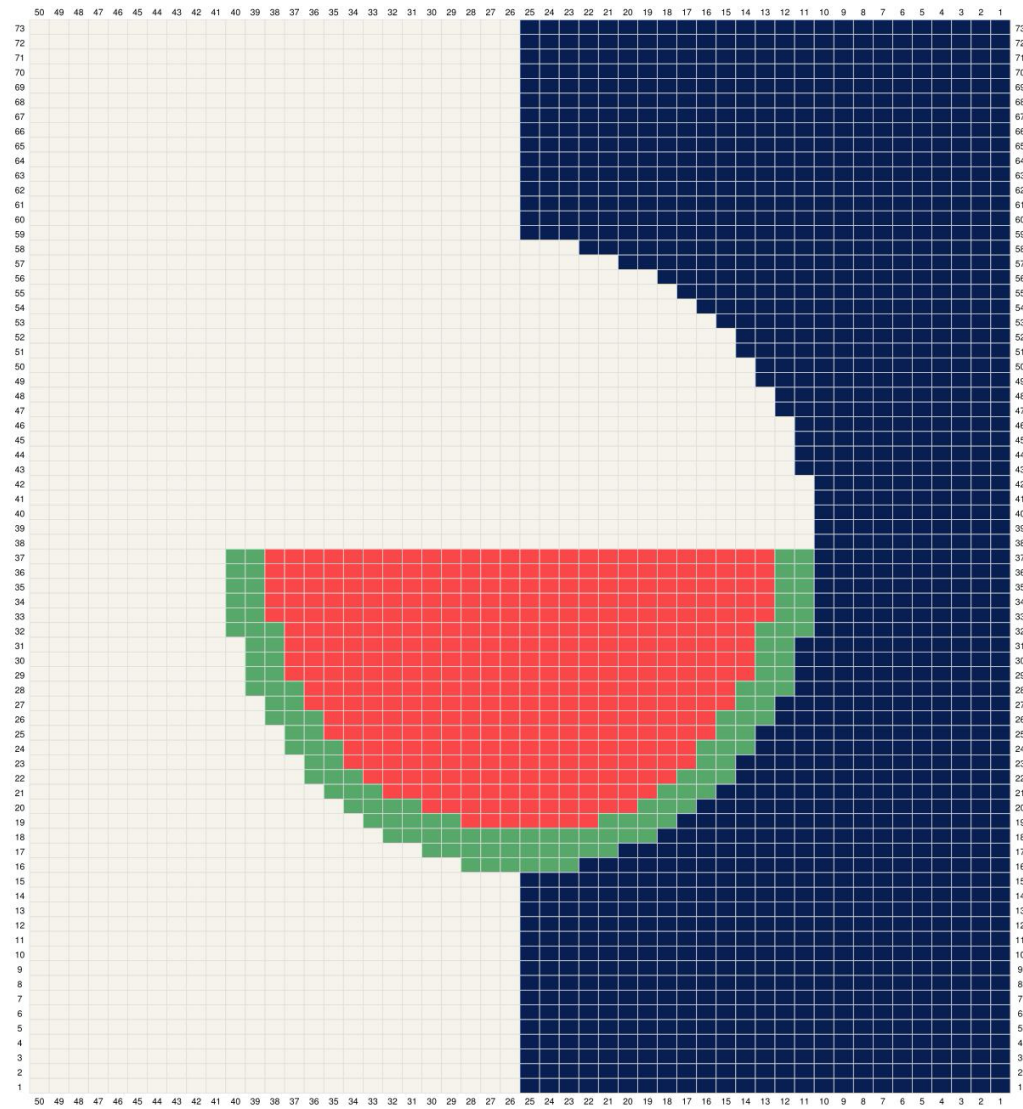


Chart 10



**alternative: Chart 10**